

ADDENDUM NO. 1

DATE: 8/25/11
TO: ALL PLAN HOLDERS
FROM: Aaron Stewart, P.E.

SUBJECT: Wittman Regional Airport, AIP 3-55-0061-27
Apron Reconstruction

This addendum forms a part of the contract documents and modifies the original proposal documents dated August 11, 2011. Acknowledge receipt of this Addendum in the space provided below and attach to your proposal form (bid form). Failure to do so may result in the rejection of your proposal (bid).

Changes to Prior Addenda:

1. No Prior Addenda

Changes to Proposal Forms:

2. The Bid Ad form has been modified. The Bid Ad form in some of the distributed plan sets had indicated a DBE goal of 6.5%. The DBE goal, as indicated in the published Bid Ad, should be 6.8%.

Addition to the Special Provisions:

3. None.

Changes to the Supplemental Specifications:

4. None.

Changes to Wage Rates:

5. None.

Changes to the Schedule of Prices:

6. None.

Changes to the Plans:

7. A note on page 9, Construction Safety Plan of the plan set, regarding access at the gate located at the main entrance to the Terminal Building, near the middle of the project, should be modified to read, "Access point for Airport authorized vehicles and small contractor vehicles only. Dump trucks and heavy equipment will not be allowed".
8. Note 1, at the bottom right hand side of page 9, Construction Safety Plan of the plan set, is modified. Added to the end of the note will be, "Runway 4/22 may be closed during all construction operations, at the discretion of the Airport."
9. Note #2, near the top left of page 9, Construction Safety Plan of the plan set, should be modified to read, "Work suspension: Any work started prior to EAA Airventure 2012 must be completed by July 1, 2012. No work will be permitted from July 2, 2012 to August 6, 2012. Work started after EAA Airventure 2012 must be completed by November 11, 2012. Any work started after April 1, 2013, must be completed by June 30, 2013.
10. Pages E4, E12, and E19 of the electrical portion of the plan set have been modified. Please see the attached 8-1/2" x 11" sheets that denote the changes.

Submitted by:



Aaron L. Stewart, PE

Title: Airport Project Manager

Receipt: Sign the following receipt and attach to the submitted proposal form.

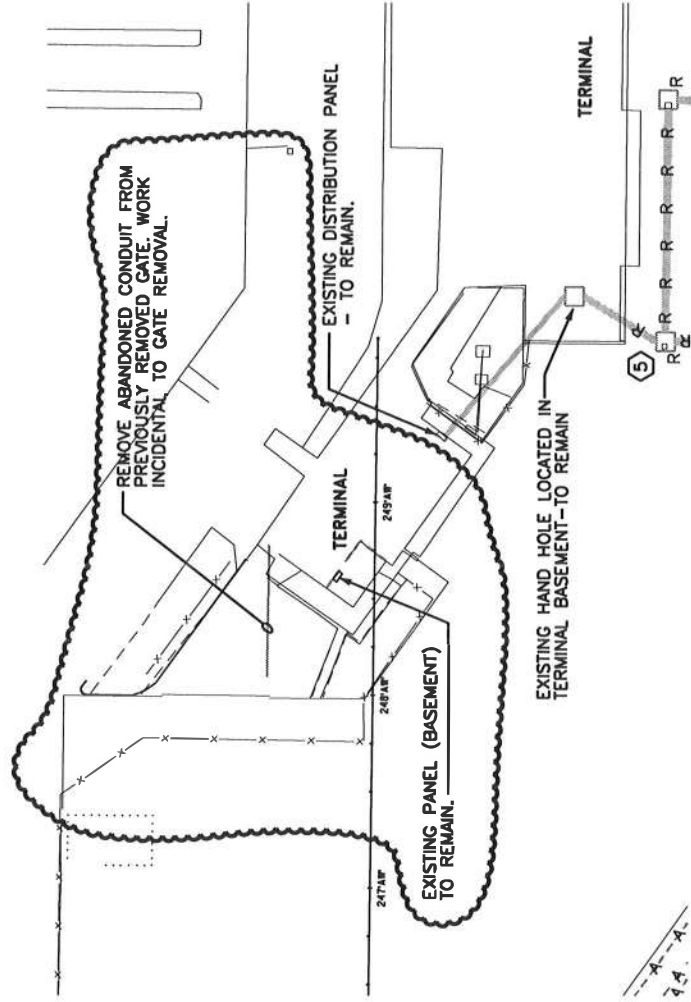
Accepted By:

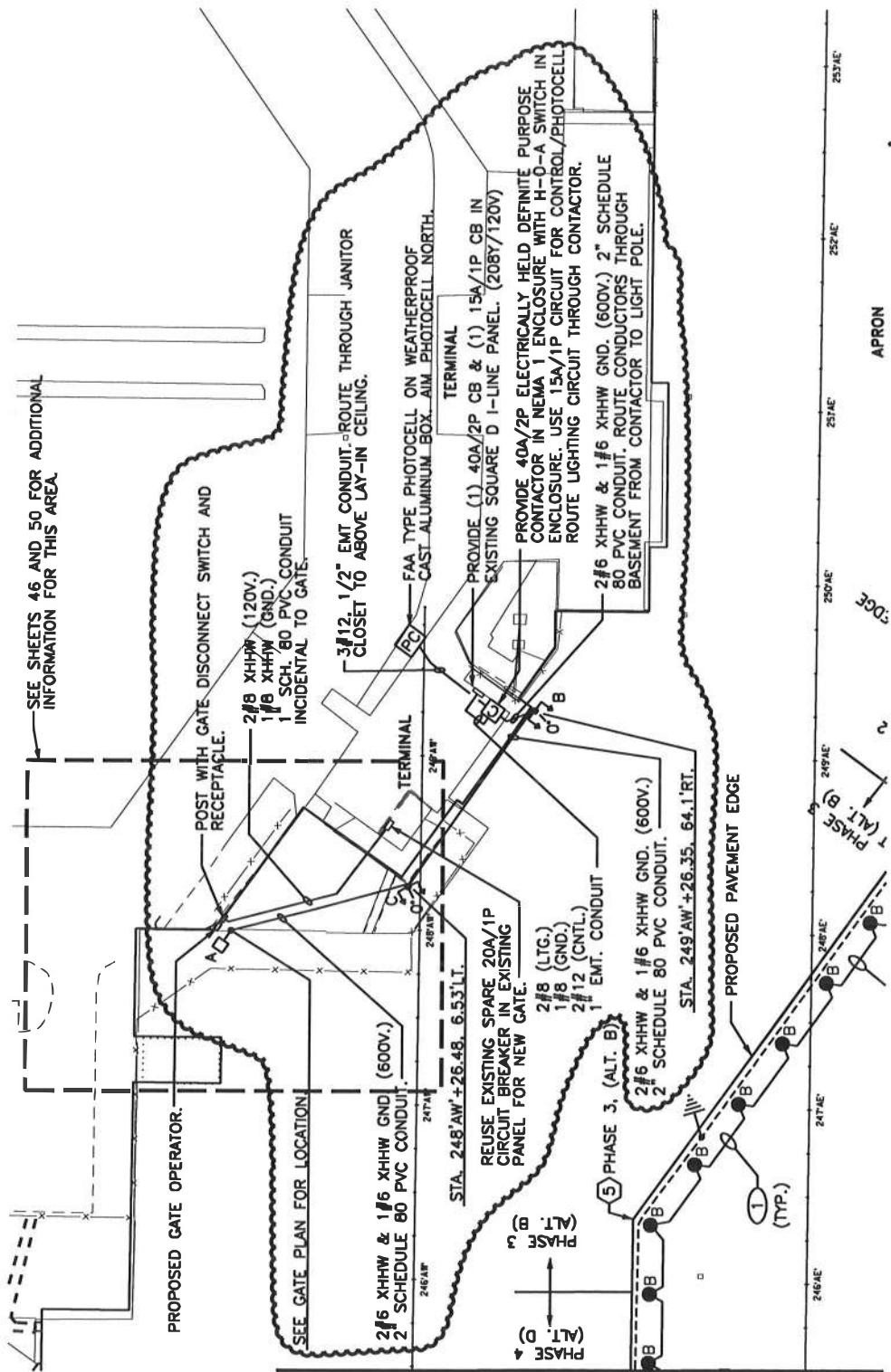
Signature

Company Name

Title

Date





SEE SHEETS 46 AND 50 FOR ADDITIONAL INFORMATION FOR THIS AREA.

PROPOSED GATE OPERATOR.

POST WITH GATE DISCONNECT SWITCH AND RECEPTACLE.

2#6 XHHW (120V.)
1#6 XHHW (GND.)
1 SCH. 80 PVC CONDUIT
INCIDENTAL TO GATE.

3#12 1/2" EMT CONDUIT - ROUTE THROUGH JANITOR CLOSET TO ABOVE LAY-IN CEILING.

FAA TYPE PHOTOCELL ON WEATHERPROOF CAST ALUMINUM BOX - AIM PHOTOCELL NORTH.

REUSE EXISTING SPARE 20A/1P CIRCUIT BREAKER IN EXISTING PANEL FOR NEW GATE.
2#8 (LTG.)
1#8 (GND.)
2#12 (CNTL.)
1 EMT. CONDUIT

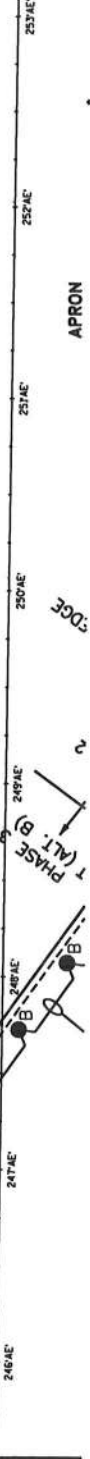
PROVIDE 40A/2P ELECTRICALLY HELD DEFINITE PURPOSE CONTACTOR IN NEMA 1 ENCLOSURE WITH H-D-A SWITCH IN ENCLOSURE. USE 15A/1P CIRCUIT FOR CONTROL/PHOTOCELL ROUTE LIGHTING CIRCUIT THROUGH CONTACTOR.

2#6 XHHW & 1#6 XHHW GND. (600V.) 2" SCHEDULE 80 PVC CONDUIT. ROUTE CONDUCTORS THROUGH BASEMENT FROM CONTACTOR TO LIGHT POLE.

2#6 XHHW & 1#6 XHHW GND. (600V.)
2" SCHEDULE 80 PVC CONDUIT.

STA. 249'AW+26.35, 64.1'RT.

PROPOSED PAVEMENT EDGE



MATCHLINE STA. 245+50 'AW'

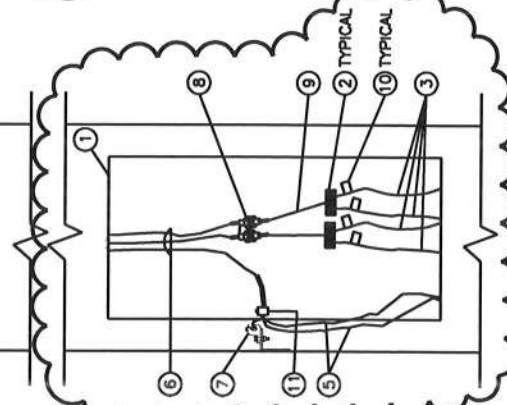
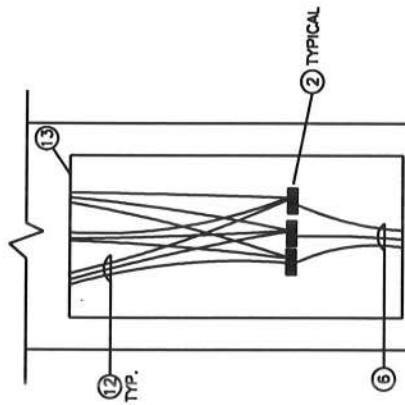
SHEET: E12 OF E19

LIGHTING FIXTURE SCHEDULE

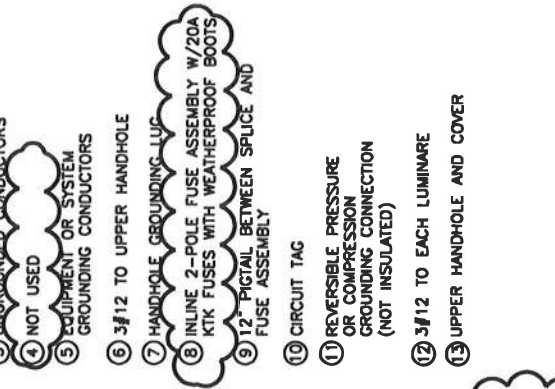
DES.	DESCRIPTION	LAMP DATA		VOLT	DEPTH	MFR.	LIGHTING FIXTURE		SEE NOTE
		NO.	TYPE				CAT. NO.		
A	TYPE 3 SHOEBOX 30" POLE	1	MS400/PS	208	-	GARDCO VALMONT	EH-19-1-4X-400PSMH-QUAD-BRP/PTF2 DS210-R660A300-P2-GF-DB-V2	1	
B	FLOOD LIGHTS 30" POLE	3	MS400/PS	208	-	GARDCO VALMONT	(2)DF12-SF-HSP-400PSMH-277-BRP-CH-LV/PTA (1)DF12-SF-HF-400PSMH-277-BRP-CH/PTA DS210-R800E300-P2-GF-DB-V2/MD103-026-01-GF-DB-V2	1,3	
C	FLOOD LIGHTS 30" POLE	5	MS400/PS	208	-	GARDCO VALMONT	(3)DF12-SF-HSP-400PSMH-277-BRP-CH-LV/PTA (2)DF12-SF-HF-400PSMH-277-BRP-CH/PTA DS210-R800E300-P2-GF-DB-V2/MD103-026-01-GF-DB-V2/ (2)M080-016-010-GF-DB-V2	1,2,3	

NOTES:

1. PROVIDE PENNSYLVANIA M400/PS/U/BT28 LAMP(S).
2. SIDE ARMS LOCATED AS CLOSE TO UPPER ARM AS POSSIBLE WHILE STILL ACCOMMODATING LUMINAIRES.
3. PROVIDE SECOND HANDHOLE AND J-HOOK AT TOP OF POLE.



TYPE B & C POLE WIRING DETAIL
NO SCALE



TYPE A POLE WIRING DETAIL
NO SCALE

- 1 HANDHOLE AND COVER
- 2 INSULATED SPLICE
- 3 UNGROUNDED CONDUCTORS
- 4 NOT USED
- 5 EQUIPMENT OR SYSTEM GROUNDING CONDUCTORS
- 6 3/12 TO UPPER HANDHOLE
- 7 HANDHOLE GROUNDING LUG
- 8 INLINE 2-POLE FUSE ASSEMBLY W/20A KTK FUSES WITH WEATHERPROOF BOOTS
- 9 12" PIGTAIL BETWEEN SPLICE AND FUSE ASSEMBLY
- 10 CIRCUIT TAG
- 11 REVERSIBLE PRESSURE OR COMPRESSION GROUNDING CONNECTION (NOT INSULATED)
- 12 3/12 TO EACH LUMINAIRE
- 13 UPPER HANDHOLE AND COVER